

UPTIME™ RMX

Wireless Remote Connectivity
More Efficiency. More Uptime



Easily Connect Critical Equipment to Improve:

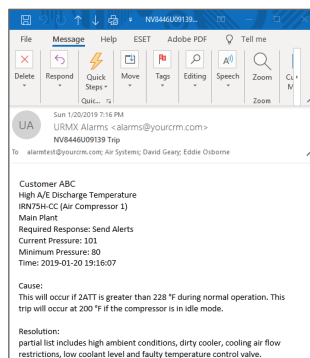
- Product Quality
- Production Uptime
- Energy Efficiency

Reduce Probability of Production Issues with:

- High Resolution Data
- Predictive Analytics
- Proactive Notifications and Alerts

Easy to Use Web Interface

- Web Login
 - Configurable by User
- Fleet Dashboard
 - Live Status of all Connected Sites
- System Dashboard
 - Real Time System Performance
- Asset Dashboard
 - Current Asset Readings

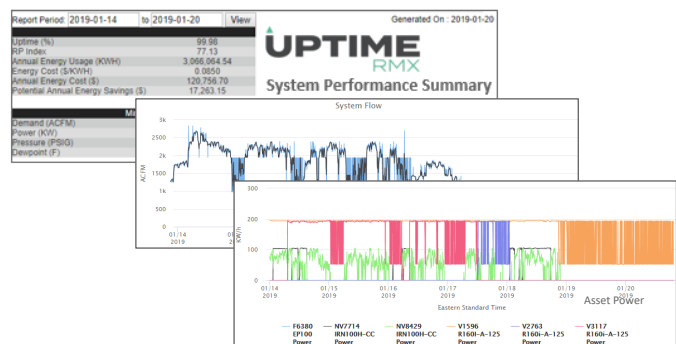


Configurable Notifications

- Email, Text, or Phone
 - Actionable Information Immediately
- Configurable for Each User
 - By Time Range, Alert Type, or Asset
- System Dashboard
 - Real Time Detailed System Performance

Data Analytics Utility

- Standard and Customized Charting
 - View any System or Asset data
- Data Export Utility
 - Export Data as Image or CSV file.
- Analytic Performance Reporting
 - Generate Instant Performance Audit



Uptimermx.com

Uptime-IoT,LLC. | info@uptime-IoT.com | 502-805-2578

UPTIMETM

RMX

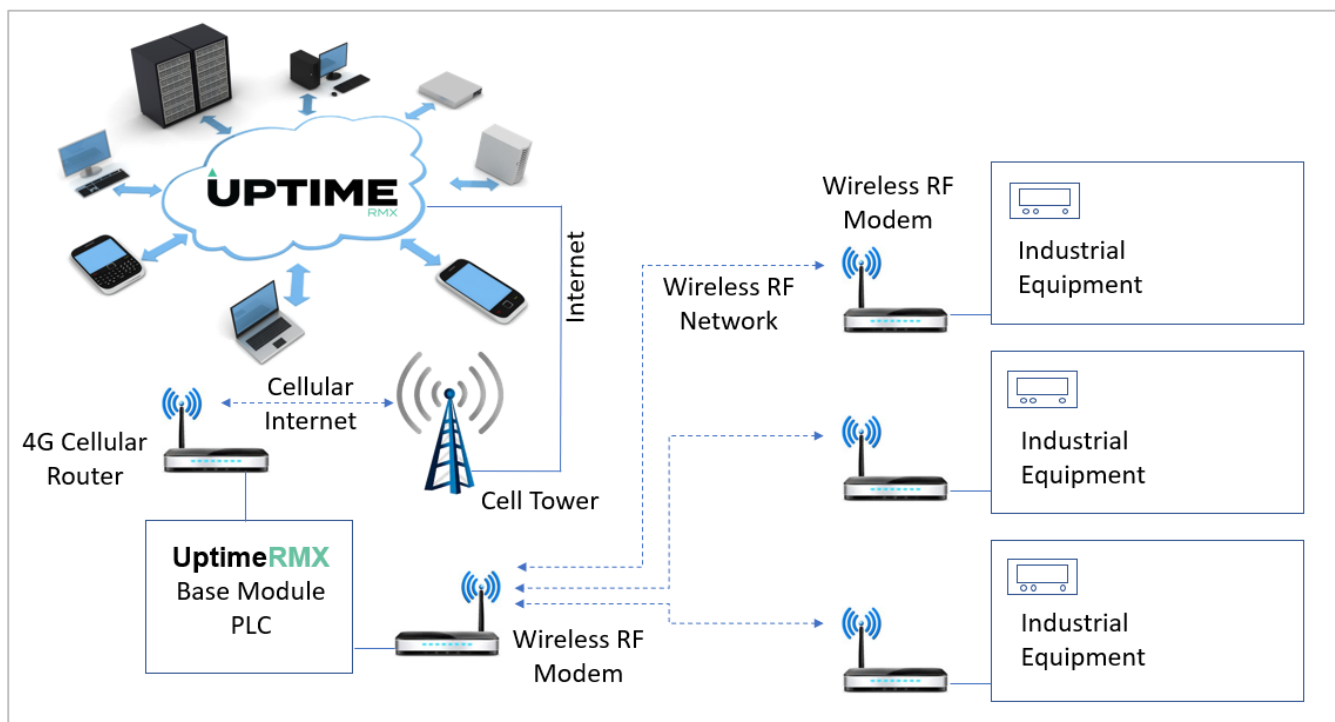
Wireless Remote Connectivity
More Efficiency. More Uptime

UptimeRMX is the most advanced solution available for system monitoring and analysis.

- Easy to use Web Interface
- No Software to Load or Maintain
- Dedicated 4G Cellular with VPN Security
- Connects to any Asset or Equipment Type
- Easy Wireless Installation
- Visibility for End Users and Service Providers
- Customized Notification via Email and Text
- Alarm Cause and Resolution Details
- Additional Analog and Digital Inputs Available
- Interface directly to Existing System Controllers
- Predictive Logic for Remaining Component Life



UptimeRMX provides cloud-based analytics for wireless remote system monitoring – delivering greater reliability, improved quality, and lower overall costs of operation. This patent pending system was uniquely developed for, and by, dedicated service professionals.



Uptimermx.com

Uptime-IoT,LLC. | info@uptime-iot.com | 502-805-2578