



Texas and Oklahoma Product & Service Solutions

Rawson
a relevant. company



Services and Solutions

Engineered Solutions

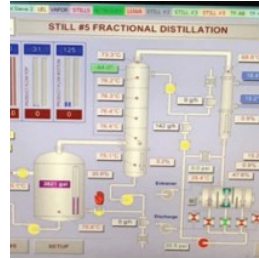
In-House Engineering & Design



On-staff engineering team that is focused on servicing our industrial customer-base that offers:

- Tailor made solutions to help customers solve their difficult process control problems

SCADA Programming & Automation



- Standard and custom configurations
- Specify solutions with the right software, controllers and all interfaces
- Customer gets a complete solution that is designed, assembled, tested and ready for installation
- Customizable from remote location

Engineering Services

Industrial Automation

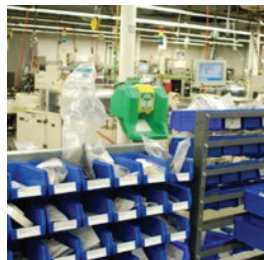
- Front End Engineering Design
- Compliance Audits
- Main Automation Contractor
- Control Skid Manufacturing
- HMI/SCADA Programming
- Custom Instrument Air and Nitrogen Packages
- System Tuning and Updates
- DCS/PLC Programming
- Wireless Network Engineering
- Measurement/Control Engineering
- Engineering CAD Drawings

Combustion Automation

- Fuel Train Design and Manufacturing
- Industrial Flame Monitoring
- Code Compliant BMS / Combustion Control Panels
- Combustion Field Service
- Burner Application Engineering
- Safety Evaluations
- GAP Studies
- Efficiency Evaluations

Services

Materials Management

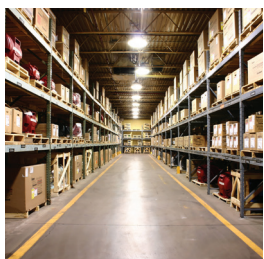


- Proactive order status reporting and expediting
- Supplier stocking programs
- EDI and bar code systems
- Lower inventory costs
- More efficient inventory management

Punch-out/E-Catalog

- Seamless interface integration between customer's MRP, ERP and EDI systems
- Shopping carts saved indefinitely provide historical project and requisition history
- Site-specific, tailored to individual customer locations
- Advanced ability to request, mail, export and print quotations
- Ability to show stock on hand from single or multiple locations
- Detailed search features to navigate an unlimited number of catalog items

In-Stock Product & Delivery Reliability



- Our reliable product deliveries meeting buyer's schedule and order cycle time requirements
- We buy in large volumes and pass the savings onto you. Managing on-site inventory and serving as a purchasing group for the customer ensures materials are delivered according to date and order cycle requirements.
- We strive to have the products you need when you want them. Vendor managed inventory and consignment programs are also available for any customer with those requirements.
- In most cases, we offer one-or-two-day shipping

Not all products are sold in all areas. Inquire for more information.

LS-TX-20211205

Valves & Valve Automation



Valve Automation

- Standard and custom valve configurations
- Complete documentation of engineering drawings for assemblies
- Customer gets a complete package - control valve, actuator and instruments – that is assembled, tested and ready for installation



- ATOMAC (TM) Lined Ball Valves
- PMV (TM) Positioners
- ARGUS (TM) Floating & Trunnion Mounted Ball Valves
- McCanna (TM) Floating & Top Entry Ball Valves



- Floating Ball Valves (Full-port, 3-piece, reduced-port)
- Cryogenic Ball Valves



- High Performance Butterfly
- Lined Plug & Butterfly Valves
- Non-Lubricated Plug Valves
- HF Alky Non-Lubricated Plug Valves



- Fluid Power Actuation
- Electric Actuators Gear Boxes



- Solenoid Valves
- Process Valves
- Pneumatic Valves
- Redundant Control System
- Fieldbus Electronics
- Manifold Systems



- Limit Switches
- Position Monitoring
- Discrete Valve Controllers
- ESD Devices



- All in One Proximity Sensor & Limit Switches
- Superior Reliability and Durability



- Desuperheaters
- Severe Service Globe Control Valves
- Ball-trol Control Valves



- 2-way & 3-way Ball Valves
- Flanged & NPT Valves
- Pneumatic Actuators
- Electric Actuators
- Valve Accessories



- Gate, Globe, Check, & Ball Valves
- From Exotic Materials
- Fast Track Delivery



- Double & Triple Offset Butterfly Valves (Tri Lok)
- Floating & Trunnion Ball Valves
- Flanged, Threaded & 3-piece Maintenance design
- Lined, metal seated, multi-port & V-ball / Segmented Ball designs
- Knife Gate Valves, Check Valves
- Valve Status Monitors & Proximity Sensors



- High Cycle Actuators
- Throttling Actuators
- 316SS Rack & Pinion Scotch Yoke Actuators



- Severe Service Ball Valves
- In-line Repairable Valves



- Gate, Globe & Check Valve
- API 6D Ball Valves

Analytical, Instrumentation, Measurement & Automation Controls



Instrument Service Shop

- Product modification/customization such as calibration, assemblies, diaphragm seals and liquid filling of gauges Bag and tag
- Rental tool program
- Minor sub-assemblies
- Improved delivery times
- More efficient inventory management
- Less inventory shrinkage
- NIST traceable certifications for pressure and temperature

azbil

- Pressure Transmitters
- Temperature Transmitters
- Remote Seal Transmitters
- Magnetic Flowmeters
- Vortex Flowmeters
- Control Valves

- Differential Pressure Gauges
- Level & Flow Gauges

- Pressure Gauges & Sensors
- Pressure Transmitters
- Diaphragm Remote Seals
- Thermometers

- Rotameters
- Variable Area Meters
- Industrial / Armored Purge Meters

- Averaging Pitot Tubes
- Wedge Meters
- Venturi Tubes

- Low Pressure Gauges
- Transmitters
- Flow & Level Switches
- Controllers & Indicators

- Pressure Calibration Products

- Tachometers
- Speed Sensors

TEL-TRU MANUFACTURING CO.
Temperature + Pressure Instruments

- Bimetal Thermometers
- Pressure Gauges
- Transmitters
- Calibrators

- Instrument Channel
- Strut & Cable Trays
- Tube Clips
- Instrument Stands
- Punched Angle

- Tubing, Pipe & Hose Clamps

- Regulators
- 316SS Tubing & Fittings

UNITED ELECTRIC CONTROLS

- Pressure & Temperature Switches & Transducers
- Wireless Gas Detection

Automation Products

- Meters
- Meter Components & Accessories
- Registers and Transmitters
- Valves
- Hydraulic Diagnostics
- Calibration
- Wyco Concrete Consolidation
- Analytics Software

Industrial Automation & Control
Premier Distributor

- Edge Control Systems
- PLC/PAC
- Operator Interface
- HMI/SCADA
- Cloud-Enabled RM&D
- Ruggedized IPC/Display
- Variable Frequency Drives

Filtration, Steam Management Solutions and Engineering Solutions



Steam Trap Surveys

- Detailed testing of every trap on site
- Factory-trained technicians use state-of-the-art equipment
- Customer pays a survey fee
- Provides a detailed schedule of all traps needing service or replacement
- Documented energy cost reductions



- Steam Trap Surveys
- Engineering Studies
- Energy Management



- FreeFloat® Steam Traps
- Thermostatic Steam Traps
- Thermodynamic Steam Traps
- Air and Drain Traps
- Steam & Condensate Manifolds
- Condensate Pumps
- Steam & Air Separators

We are North America's Largest Parker Distributor



Rawson is a certified Instrumentation Solution Center and North America's largest distributor of Parker Instrument Products Division (IPD) products. This provides our customers with these advantages:

- Largest Inventory
- Fastest Delivery
- Expert Staff and Best Service
- Tough Applications - Solved



Parker Autoclave

- High Pressure Valves
- Fittings and Tubing
- High pressure pumps

Parker Bestobell

- Cryogenic Gate, Globe & Check Valves

Parker Finite

- Instrument Air Filters
- Natural Gas Filters
- Coalescing Filters

Parker Instrumentation

- Instrument Tube Fittings
- Quick Couplings
- High/Medium Pressure
- Ball, Plug, Needle & Check Valves
- Manifolds & Thermowells
- Flowmeters & Rotameters



Parker Multitube

- Bundles/Sinple Line Tubing
- Electric Traced Tubing
- Steam Traced Tubing

Parker Partek

- PFA fittings
- PFA/PTFE Valves
- PFA/PTFE Sensing & Control/ Spray Products
- PFA Tubing
- PFA Pressure Vessels
- PVC/CPVC Valves



Parker PGI

- Instrument Manifolds & Valves
- Isolation Valves
- Double-block-and-bleed Valves
- Continuous Natural Gas Samplers
- Green Energy Battery Chargers

Parker Veriflo

- Instrument Regulators
- Pressure Reducing Regulators
- Cylinder Regulators
- Vaporizing Regulators
- Changeover Systems

Filtration

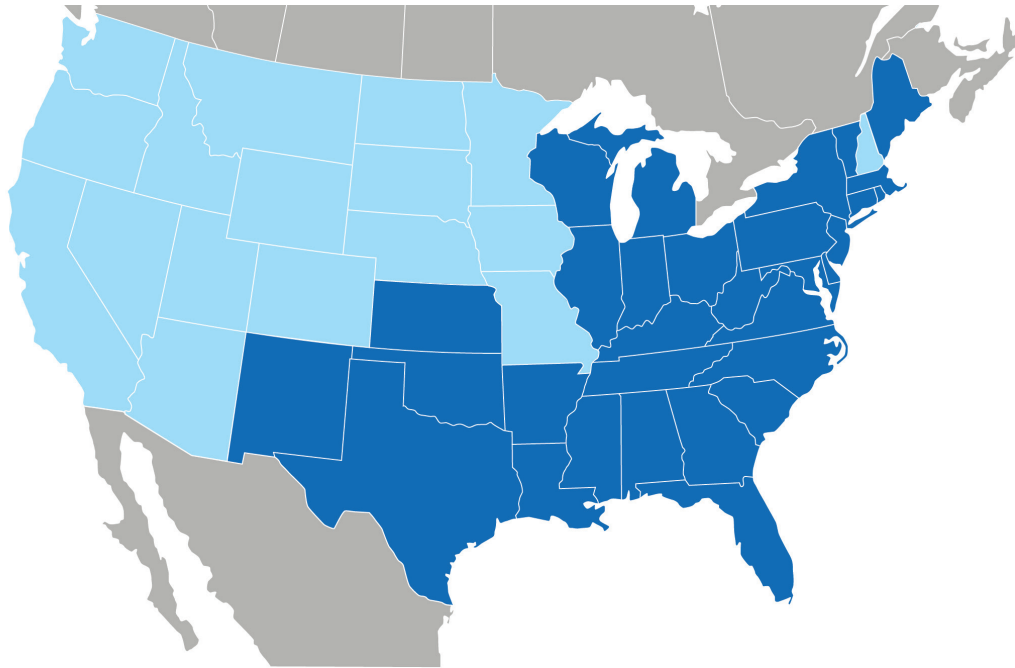


- Demineralized Water Filters
- Filters for Lube Oil & Liquid Fuel
- Filters for Seal Gas
- Fuel Gas
- Indufil® Replacement Filter Elements

Not all products are sold in all areas. Inquire for more information.

About Rawson

Rawson, Inc. (a Relevant Company) is a leading industrial distribution company based in Houston, Texas. Founded in 1954, Rawson is the premier instrumentation, valve, and controls distributor in the United States. With stocked service centers throughout Texas, Louisiana, and Oklahoma, and stocked service centers in those states, Rawson maintains a large inventory along with outstanding technical support close to our customer base. Our goal is to partner with our customers to develop innovative and sustainable solutions, as well as reduce cost of total ownership through technology, operations excellence, and strong customer focus. We do not just respond to emergencies: we create systems to anticipate and eliminate them.



■ Primary coverage area for customer base ■ Secondary coverage area

Contact Information

Inquiries and Quotations/General Questions

713-684-1400

800-779-1414

info@rawsonlp.com

www.rawsonicd.com