

**Rawson**

a relevant. company



**PRODUCT AND  
SERVICES PORTFOLIO**

888.858.3647 | [relevantsolutions.com](http://relevantsolutions.com) | [rawsonicd.com](http://rawsonicd.com)

# Your Partner for Relevant Solutions

## We are North America's Largest Parker Distributor



Rawson is a certified Instrumentation Solution Center and North America's largest distributor of Parker Instrument Products Division (IPD) products. This provides our customers with these advantages:

- Largest Inventory
- Fastest Delivery
- Expert Staff and Best Service
- Tough Applications - Solved



### Parker Autoclave

- High Pressure Valves
- Fittings and Tubing
- High pressure pumps

### Parker Finite

- Instrument Air Filters
- Natural Gas Filters
- Coalescing Filters

### Parker Instrumentation

- Instrument Tube Fittings
- Quick Couplings
- High/Medium Pressure
- Ball, Plug, Needle & Check Valves
- Manifolds & Thermowells
- Flowmeters & Rotameters



### Parker Bestobell

- Cryogenic Gate, Globe & Check Valves

### Parker Partek

- PFA fittings
- PFA/PTFE Valves
- PFA/PTFE Sensing & Control/Spray Products
- PFA Tubing
- PFA Pressure Vessels
- PVC/CPVC Valves
- Fluid Connectors



### Parker PGI

- Instrument Manifolds & Valves
- Isolation Valves
- Double-block-and-bleed Valves
- Continuous Natural Gas Samplers
- Green Energy Battery Chargers

### Parker Veriflo

- Instrument Regulators
- Pressure Reducing Regulators
- Cylinder Regulators
- Vaporizing Regulators
- Changeover Systems

## Steam Trap Surveys

- Detailed testing of every trap on site
- Factory-trained technicians use state-of-the-art equipment
- Customer pays a survey fee
- Provides a detailed schedule of all traps needing service or replacement
- Documented energy cost reductions



- FreeFloat® Steam Traps
- Thermostatic Steam Traps
- Thermodynamic Steam Traps
- Air and Drain Traps
- Steam & Condensate Manifolds
- Condensate Pumps
- Steam & Air Separators



- Steam Trap Surveys
- Engineering Studies
- Energy Management

## Filtration



- Demineralized Water Filters
- Filters for Lube Oil & Liquid Fuel
- Filters for Seal Gas
- Fuel Gas
- Indufil® Replacement Filter Elements



# Analytical, Instrumentation, Measurement & Automation Controls

## azbil

Pressure Transmitters, Temperature Transmitters, Remote Seal Transmitters, Magnetic Flowmeters, Vortex Flowmeters, and Control Valves

 **Orange Research**

Differential Pressure Gauges, Level & Flow Gauges

 **AMETEK**®  **USG**  
U.S. Gauge

Pressure Gauges & Sensors, Pressure Transmitters, Diaphragm Remote Seals, and Thermometers

 **UGSI Chemical Feed**  
SOLUTIONS

**Wallace & Tiernan**® an **EVOCQUA** brand

Rotameters, Variable Area Meters, and Industrial / Armored Purge Meters

## McMENON

Averaging Pitot Tubes, Wedge Meters, and Venturi Tubes

## Dwyer

a DwyerOmega brand

Low Pressure Gauges, Transmitters, Flow & Level Switches, and Controllers & Indicators

 **Ralston Instruments**

Pressure Calibration Products

 **a.i.tek**

Tachometers and Speed Sensors

 **Van London**  
AN ALPHA MEASUREMENT SOLUTIONS BRAND

Water and Gas Analyzers (including pH/ORP), Conductivity, Dissolved Oxygen, Chlorine, Combustible and Toxic Gas Detection, Flame detection, Gas & Fire Controllers, Moisture, and Ion Selective Electrodes

## Panametrics

Spool Piece and Clamp-On Ultra Sonic Flow Meters for Liquid or Gas Applications, O2 Analyzers, Moisture Analyzers

 **TEL-TRU**  
**MANUFACTURING CO.**  
Temperature + Pressure Instruments

Bimetal Thermometers, Pressure Gauges, Transmitters, and Calibrators

 **CHANNEL TRACK**  
2.0  
STRUCTURED EXCELLENCE

Punched angle, Punched channel, Stainless steel tubing clamps, Gang clamp, Instrument tubing tray, Instrument pipe stands, Cable tray, and Condensate pots

 **STAUFF**®

Tubing, Pipe & Hose Clamps

 **CARDINAL**  
UHP

Regulators, 316SS Tubing & Fittings

 **O'BRIEN** / **AMETEK**®

Tubing bundles, Instrument Enclosure & Protection, Tube Tracing Systems

 **Badger Meter**

Meters, Meter Components & Accessories, Registers and Transmitters, Valves, Hydraulic Diagnostics, Calibration, Wyco Concrete Consolidation, and Analytics Software

# Valves & Valve Automation



## Valve Automation

- Standard and custom valve configurations
- Complete documentation of engineering drawings for assemblies
- Customer gets a complete package - control valve, actuator and instruments – that is assembled, tested and ready for installation



ATOMAC (TM) Lined Ball Valves, PMV (TM) Positioners, ARGUS (TM) Floating & Trunion Mounted Ball Valves, and McCanna (TM) Floating & Top Entry Ball Valves, WORCESTER Floating Ball Valves (Full-port, flanged, 3-piece, reduced-port), DURCO Non-Lubricated Plug Valves, High Performance Butterfly Valves



Fluid Power Actuation



Solenoid Valves, Process Valves, Pneumatic Valves, Redundant Control System, Fieldbus Electronics, and Manifold Systems



Control Valves, etc.



Linear Control Valves



All in One Proximity Sensor & Limit Switches, Superior Reliability and Durability



Desuperheaters, Severe Service Globe Control Valves, Ball-trol Control Valves



Pressure and Flow Regulators



Thermal Plastic Valves, Actuators



Industrial, Sanitary, Diaphragm and Ball Valves



Linear and Rotary Control Valves, Desuperheaters



Pinch Valves, Knife Gate Valves, and Actuation



Ball Valves, Gate Globe and Check, and Butterfly Valves, Actuation

# Services and Solutions

## Engineered Solutions

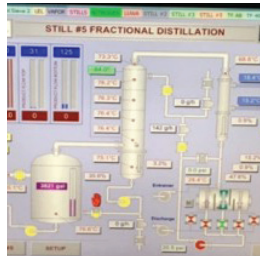
### In-House Engineering & Design



On-staff engineering team that is focused on servicing our industrial customer-base that offers:

- Tailor made solutions to help customers solve their difficult process control problems

### SCADA Programming & Automation



- Standard and custom configurations
- Specify solutions with the right software, controllers and all interfaces
- Customer gets a complete solution that is designed, assembled, tested and ready for installation
- Customizable from remote location

## Industrial Automation

- Front End Engineering Design
- Compliance Audits
- Main Automation Contractor
- Control Skid Manufacturing
- HMI/SCADA Programming
- Custom Instrument Air and Nitrogen Packages
- System Tuning and Updates
- DCS/PLC Programming
- Wireless Network Engineering
- Measurement/Control Engineering
- Engineering CAD Drawings

## Combustion Automation

- Fuel Train Design and Manufacturing
- Industrial Flame Monitoring
- Code Compliant BMS / Combustion Control Panels
- Combustion Field Service
- Burner Application Engineering
- Safety Evaluations
- GAP Studies
- Efficiency Evaluations



Industrial  
Automation & Control  
Premier Distributor

## Automation Products

- Edge Control Systems
- PLC/PAC
- Operator Interface
- HMI/SCADA
- Cloud-Enabled RM&D
- Ruggedized IPC/Display
- Variable Frequency Drives

## Services

### Materials Management



- Proactive order status reporting and expediting
- Supplier stocking programs
- EDI and bar code systems
- Lower inventory costs
- More efficient inventory management

### E-Catalog / Punch-out



- Seamless interface integration between customer's MRP, ERP and EDI systems
- Shopping carts saved indefinitely provide historical project and requisition history
- Site-specific, tailored to individual customer locations
- Advanced ability to request, mail, export and print quotations
- Ability to show stock on hand from single or multiple locations
- Detailed search features to navigate an unlimited number of catalog items



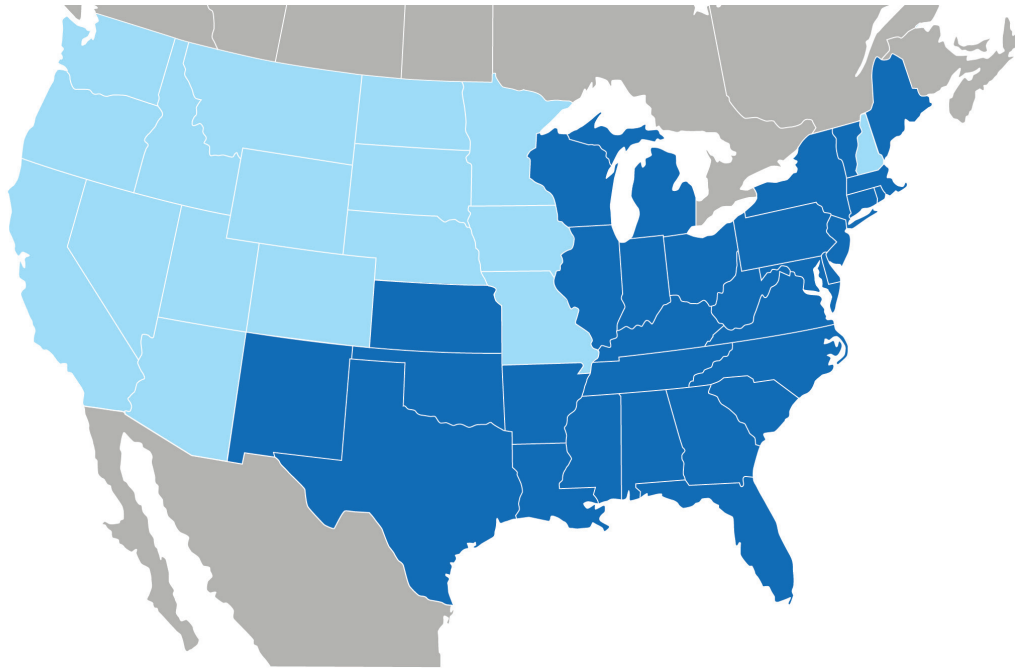
### Instrument Service Shop

- Product modification/customization such as calibration, assemblies, diaphragm seals and liquid filling of gauges Bag and tag
- Rental tool program
- Minor sub-assemblies
- Improved delivery times
- More efficient inventory management
- Less inventory shrinkage
- NIST traceable certifications for pressure and temperature

*Not all products are sold in all areas. Inquire for more information.*

## About Rawson

Rawson, Inc. (a Relevant Company) is a leading industrial distribution company based in Houston, Texas. Founded in 1954, Rawson is the premier instrumentation, valve, and controls distributor in the United States. With stocked service centers throughout Texas, Louisiana, and Oklahoma, and stocked service centers in those states, Rawson maintains a large inventory along with outstanding technical support close to our customer base. Our goal is to partner with our customers to develop innovative and sustainable solutions, as well as reduce cost of total ownership through technology, operations excellence, and strong customer focus. We do not just respond to emergencies: we create systems to anticipate and eliminate them.



■ Primary coverage area for customer base    ■ Secondary coverage area

### Contact Information

#### Inquiries and Quotations/General Questions

713-684-1400

800-779-1414

[info@rawsonlp.com](mailto:info@rawsonlp.com)